



Northside  
Partnership

# Welcome to the Delegation from Finland

4<sup>th</sup> April 2016

# Today... Northside Partnership

- Who are we?
- What do we do?
- Social Inclusion Community Activation Programme (SICAP)?
  - + Multiple other programmes
- Local Government Reform & Local Development
  - Local Community Development Committees (LCDC)
  - Public Participation Networks (PPN)

# Northside Partnership (NSP)

- Local Development Company
- Area Based Partnership Company
- Community Based Organisation
- Independent company under corporate law
  - Company Limited by Guarantee
  - Non Profit
  - NGO
- Almost fully funded by the State
- Delivery of State Services – Targeted approach

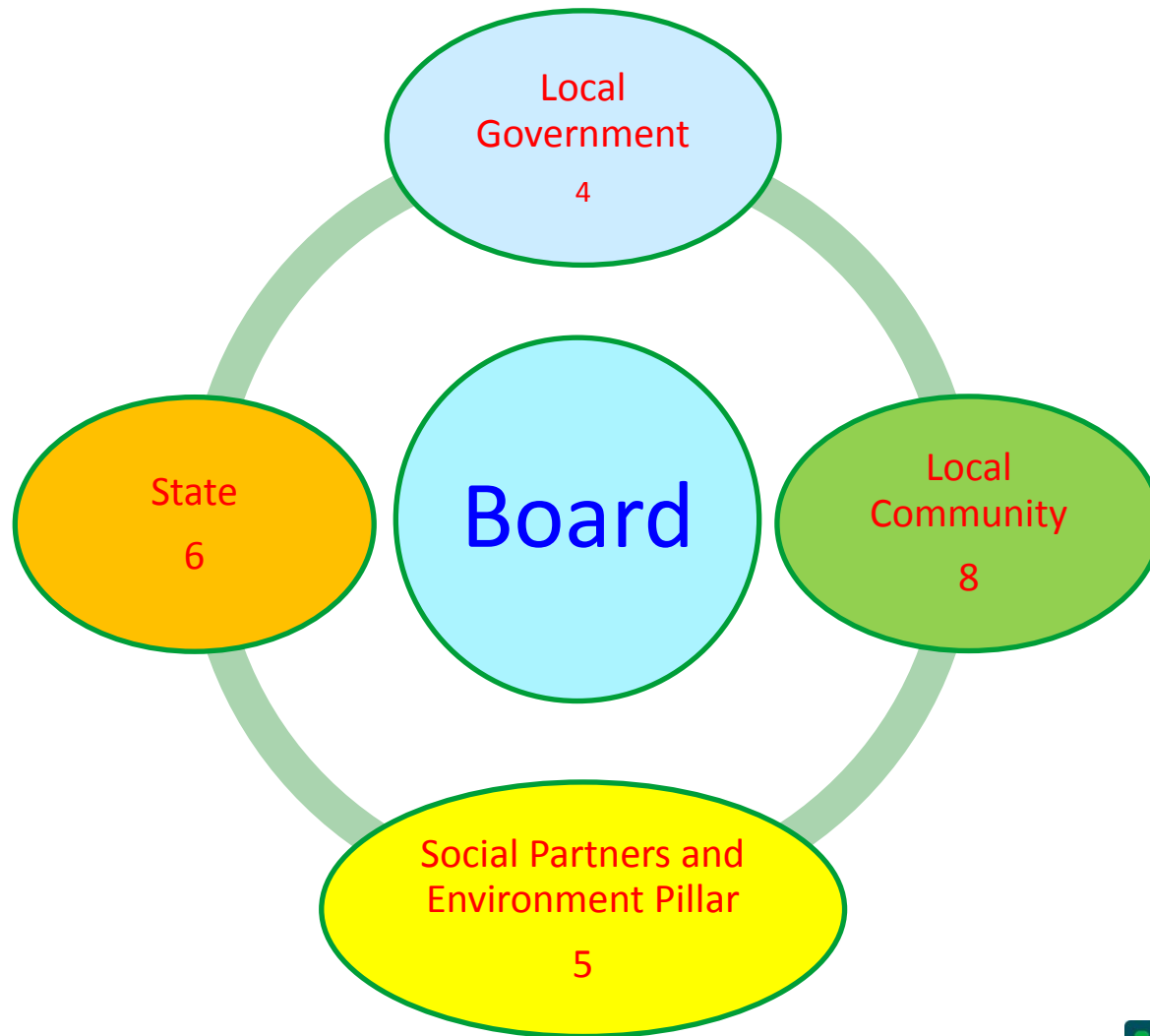
# Origin of Local Partnership and NSP

- 1970-90s serious structural unemployment
- 60%+ in inner city and new suburbs
- Services not able to cope
- New partnership approach tried from “bottom up”
- EU funding: 12 pilots in **Unemployment Black Spots** including Northside Partnership
- Partnership: Social Partners, State, Community, Politicians
- Neutral Space for new ideas to be tested

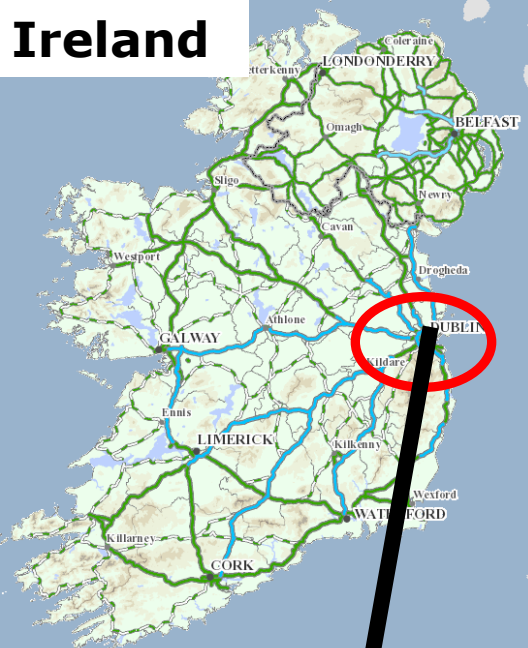
# Northside Partnership established in 1991

- Area based approach to long term unemployed (LTU) people & Social inclusion
- Harnessing local & national partners
- Identify needs/issues affecting LTU
- Integrated approach
  - Education
  - Training
  - Employment
  - Enterprise
  - Community Development
- Bottom up approach to inform top down policies and planning

# Board Governance Structure

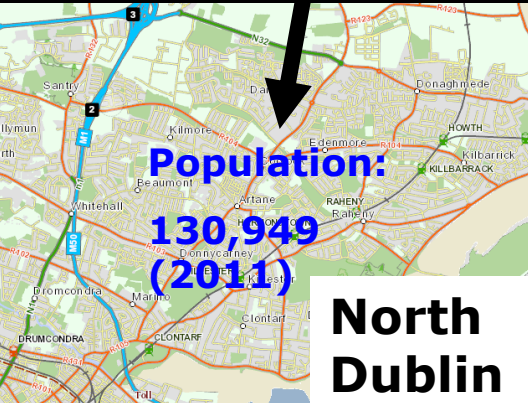
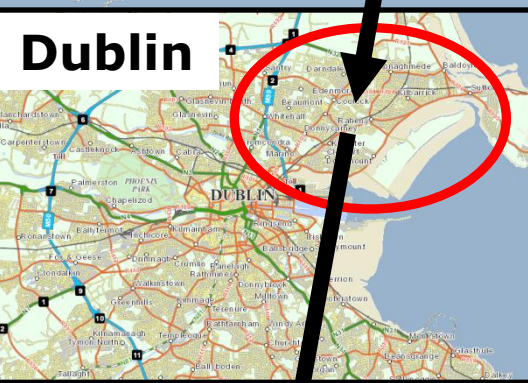


# Ireland



# Our operational area

## Dublin



## North Dublin

### District 1:

- 3rd Level Education: 9.8 %
- Lone Parents: 39 %
- Population: 11,730
- +Low School readiness
- +Concentration of C&V Supports
- +Traveller Sites
- +2 RAPID Areas

### District 2:

- 3rd Level Education: 21.4 %
- Lone Parents: 19.3 %
- Population: 14,560
- + Issues re. New Towns of Clongriffin/Belmayne
- +Community Safety

### District 3:

- 3rd Level Education: 21.1 %
- Lone Parents: 23.4 %
- Population: 15,120
- +Few Community groups
- +Hospital divides area
- +Redevelopment on hold

### District 5:

- 3rd Level Education: 21.5 %
- Lone Parents: 25.3 %
- Population: 11,340
- +Drug-related crime
- +Community safety
- +Ageing neighbourhoods within

### District 6:

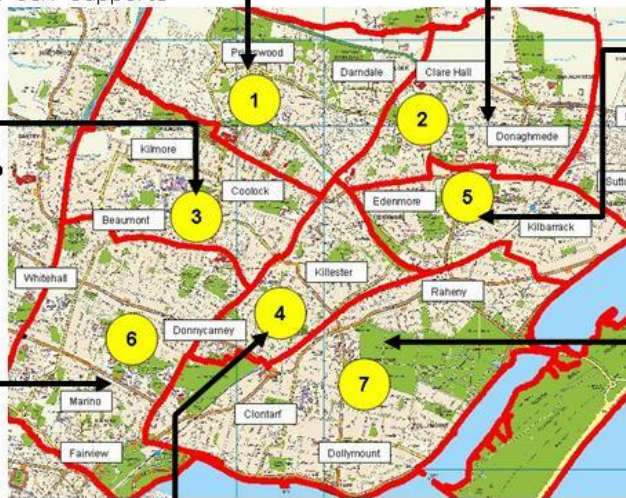
- 3rd Level Education: 35.5 %
- Lone parents: 16.5 %
- Population: 19,560
- +Pocket of Disadvantage (Casino Area)
- +Cluster of Older people living alone
- +Many Students in area
- +Influx of migrants in parts of area

### District 7:

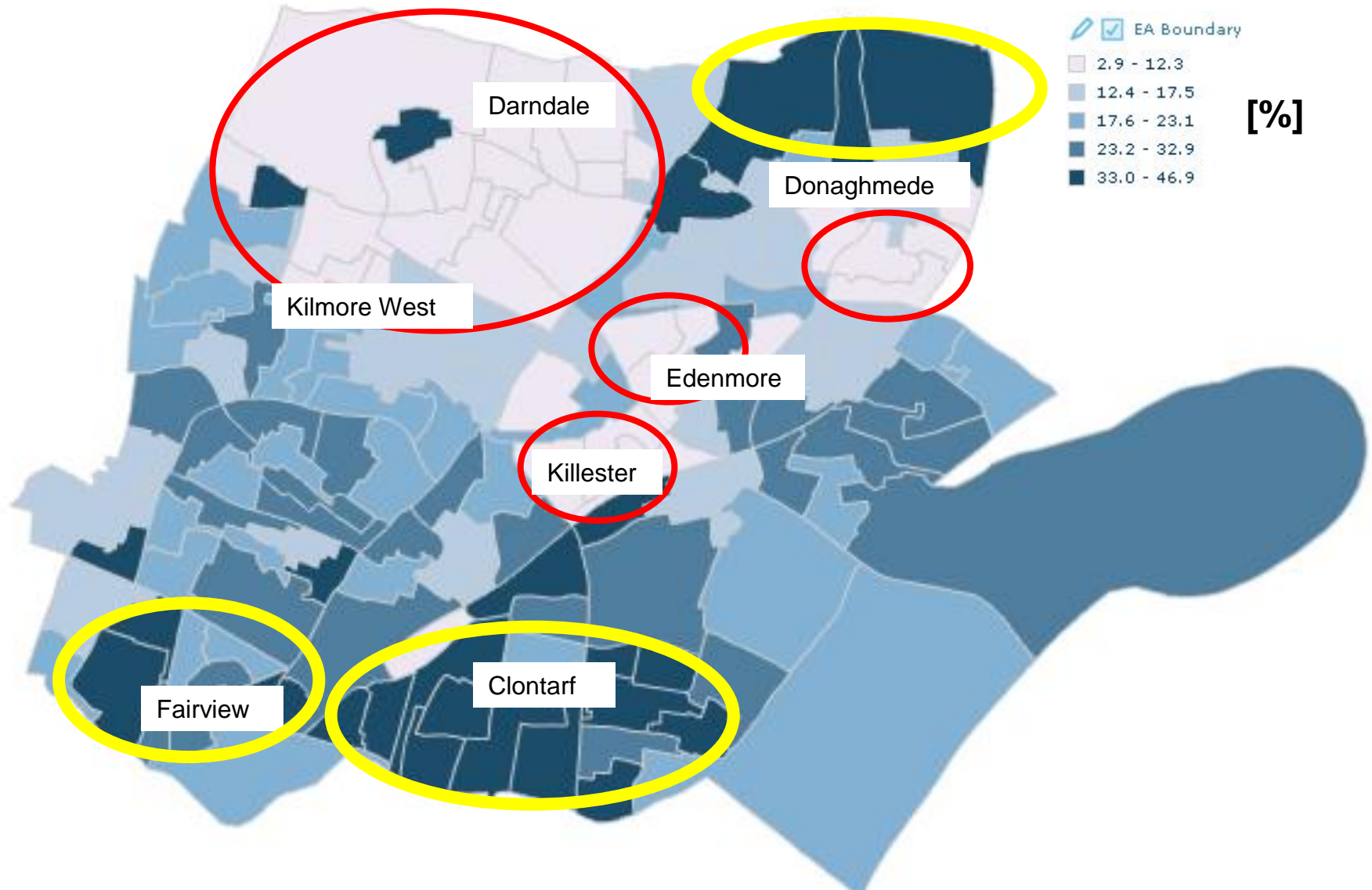
- 3rd Level Education: 54.1 %
- Lone Parents: 13.5 %
- Population: 18,830
- +Good amenities
- +High levels of Affluence
- +High-priced housing
- +Greying population
- +Fuel Poverty

### District 4:

- 3rd Level Education: 23.4 %
- Lone Parents: 23.5 %
- Population: 8,860
- +Know little about parts of area
- +Aging population



# 3<sup>rd</sup> Level Education completed by Area





# Issues and their Manifestation

- Low educational attainment (literacy)
- Poor services (e.g. public transport)
- Intergenerational unemployment
- Concentrations of Social Housing
- Drug abuse & associated problems
- Some areas are run down
- Welfare Dependency
- People disaffected
- Concentration of state-funded services



# Community Open Green Space



# Ghost estates – a living nightmare for those who live beside and within them



# Living with Bonfires

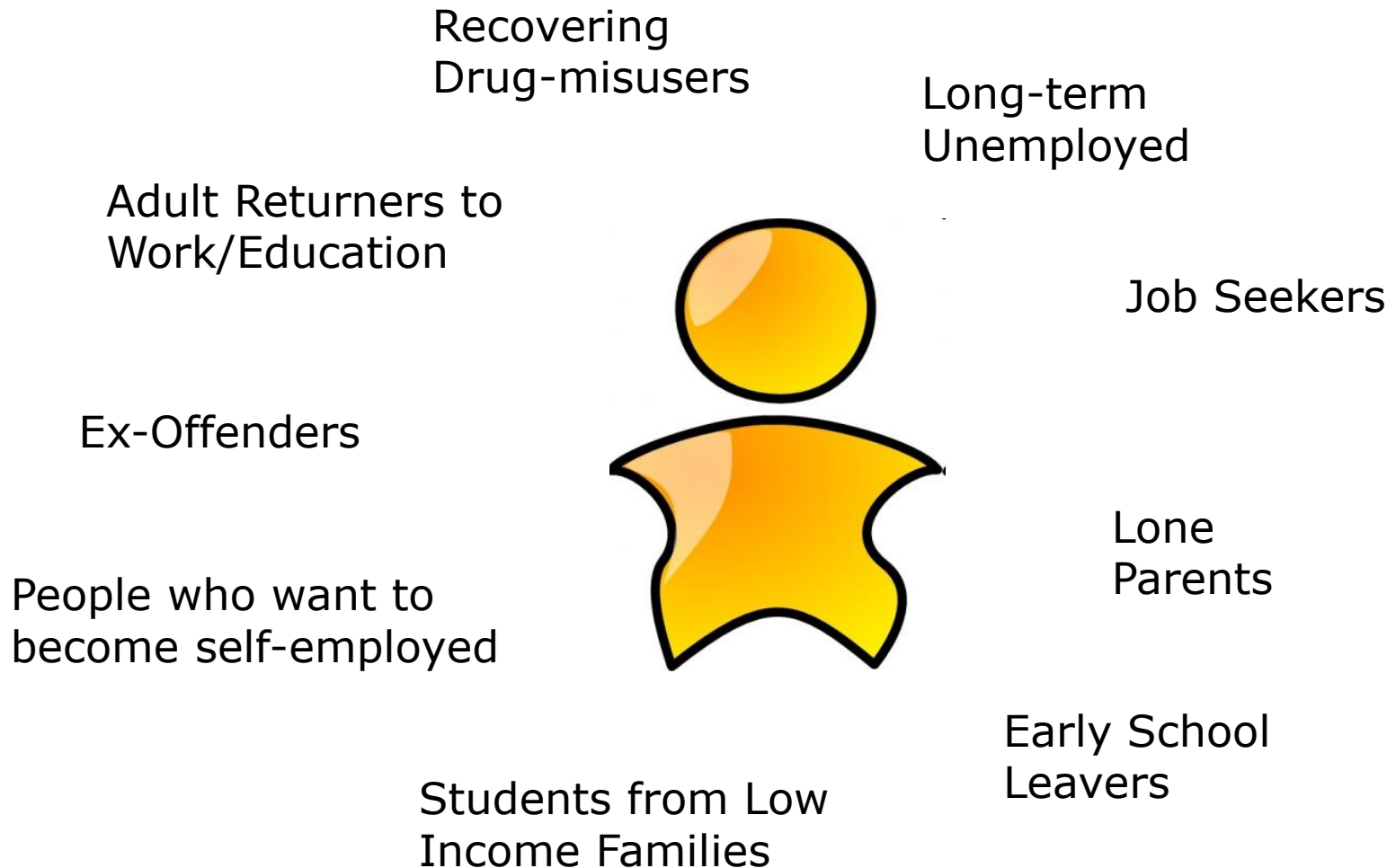


# Employment Issues

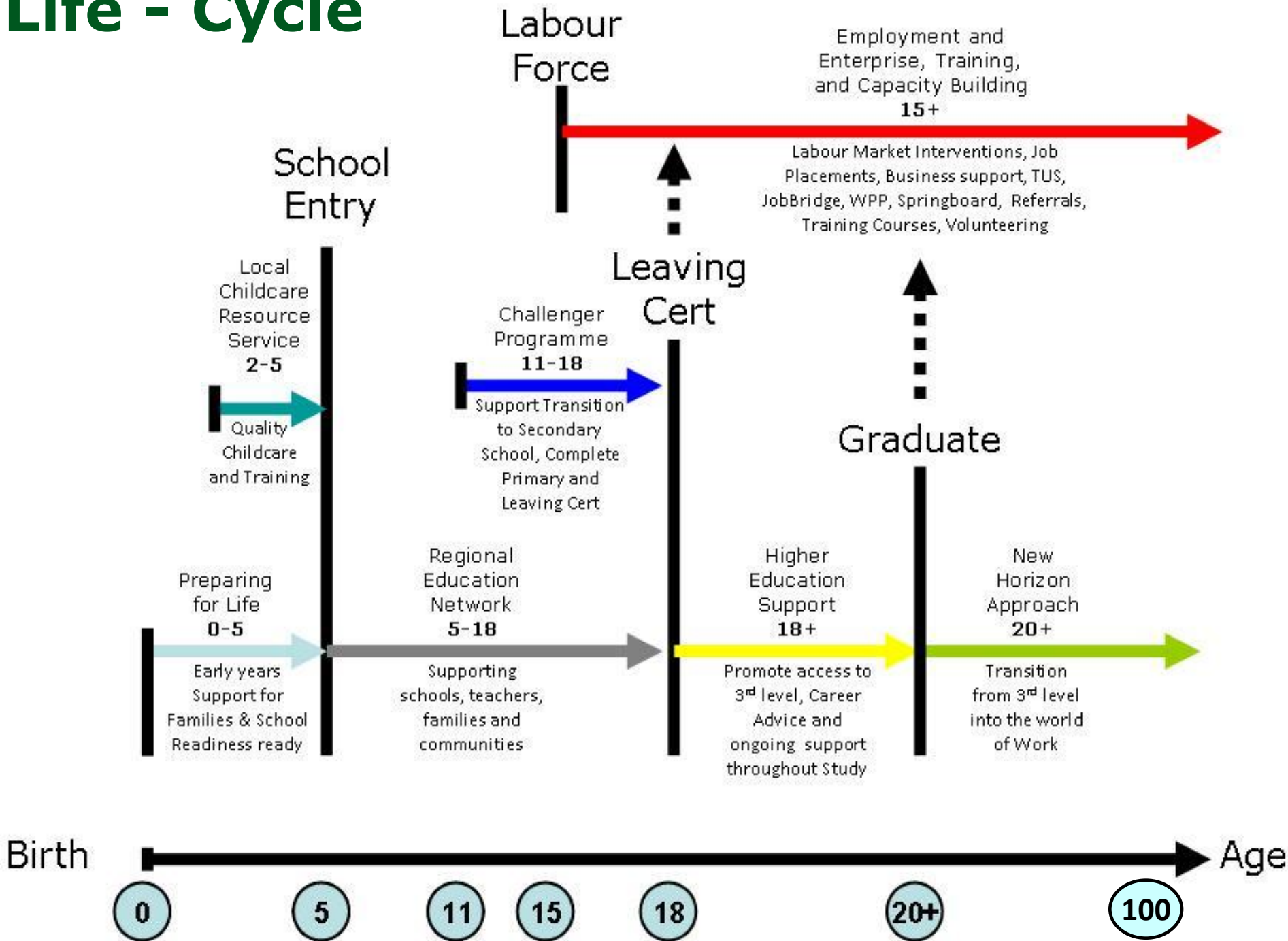
- Quantity of people Unemployed
- Youth Unemployment
- Lack of suitable Jobs
- Structural issues
- Lack of Finance for training



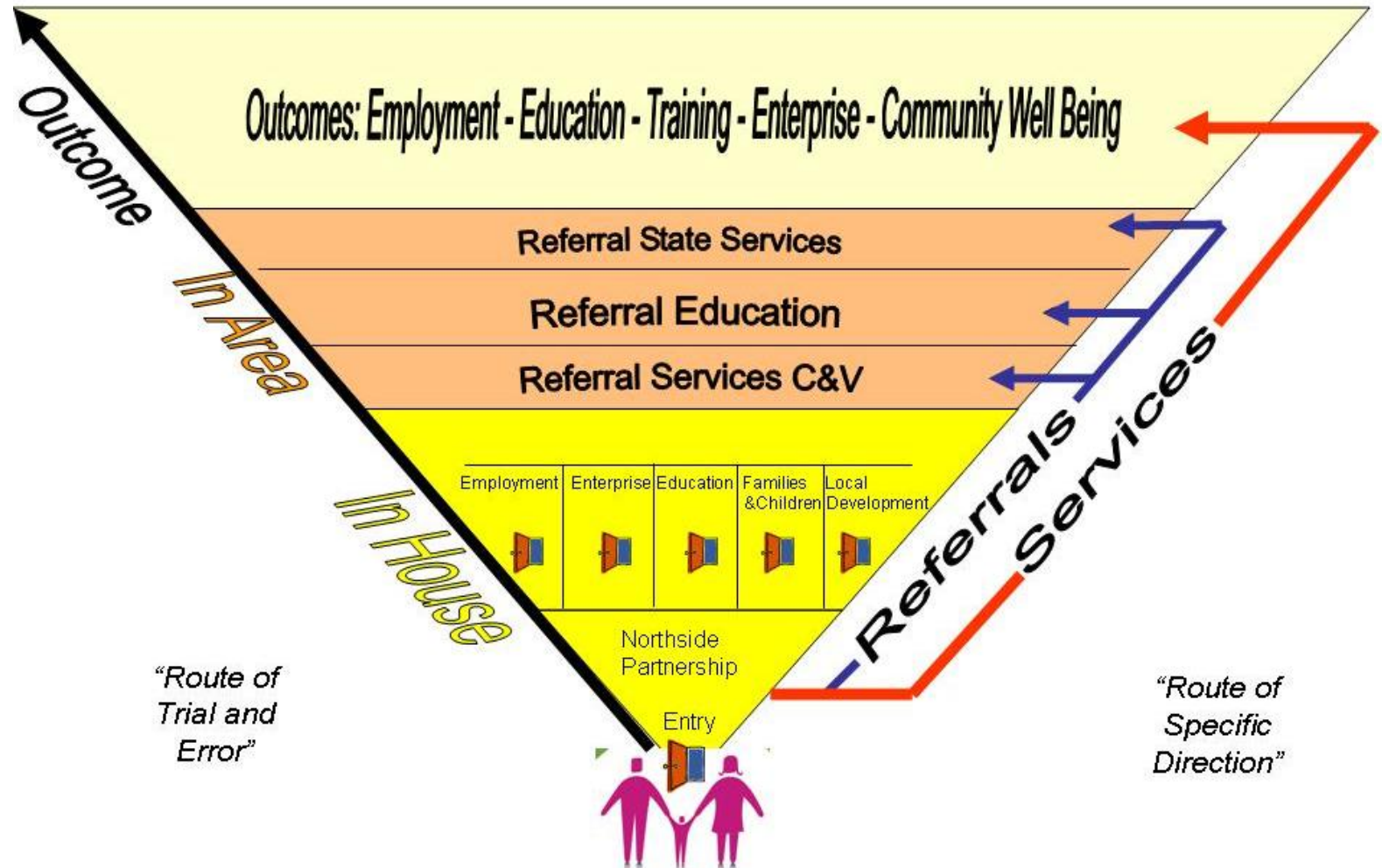
# Who we assist



# Life - Cycle



# How we work: Every Door Will Do



One Door for All – “Any Door Will Do”





Northside  
Partnership

# SICAP?

**What it is**

**What we do**

# SICAP 2015-17 – What it is?

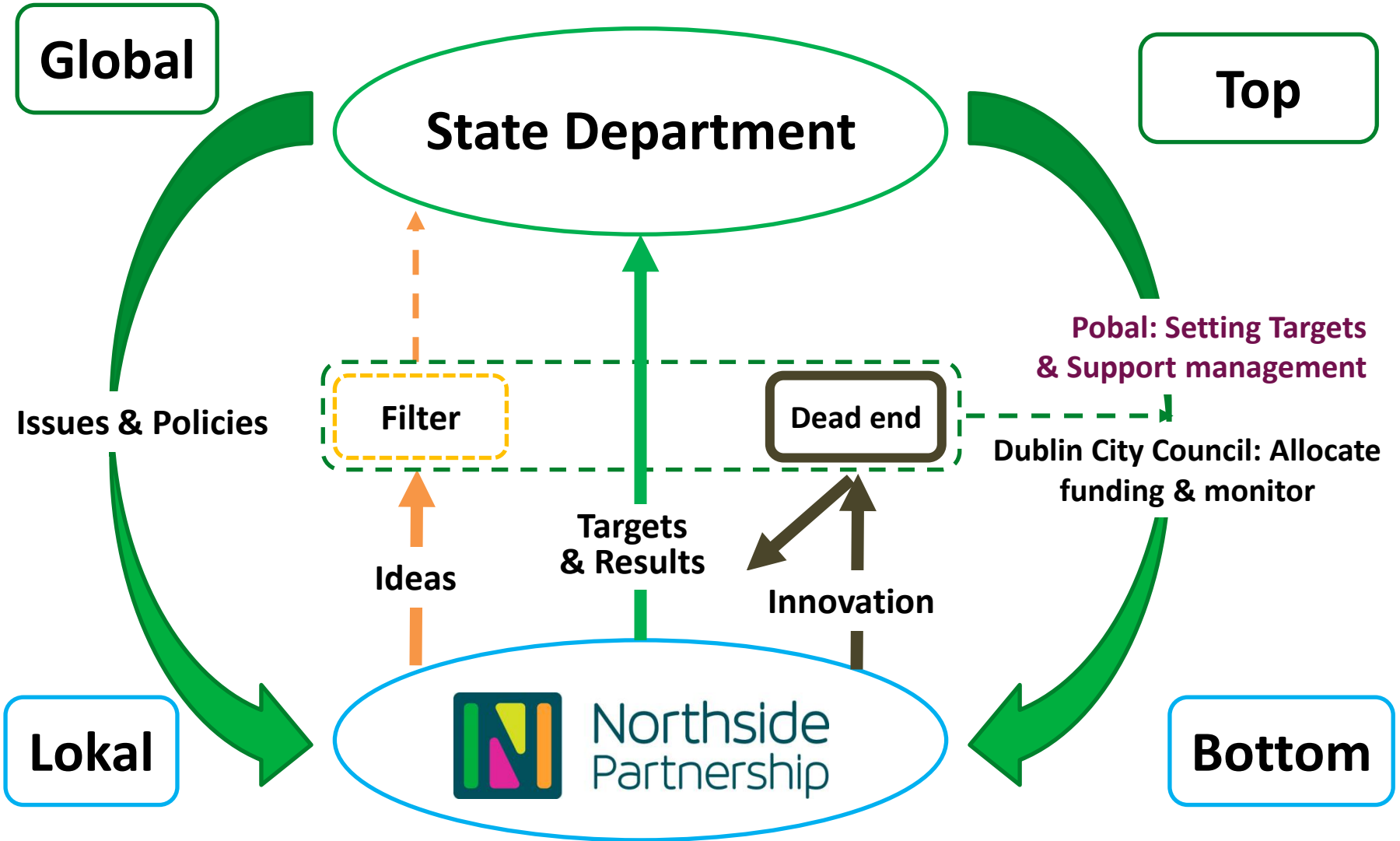
Social Inclusion and Community Activation Programme (SICAP)

- **Context?** Procurement process - Had to win contract for delivery
- **Aim?** Reduce poverty, promote social inclusion and equality
- **How?** Local, regional, national engagement & collaboration
- **What?** Improve the life chances and opportunities of marginalised people, those living in poverty or affected by (long-term) unemployment
- **Method?** State-led contracting of service delivery. No matter what they tell you, it is not Community-Led Local Development

# SICAP 2015-17 – What it is

- **Main thrust?** Complement statutory services
  1. Assist groups who deliver state-funded service to become more effective / compliant
  2. Support involvement of local groups in local networks and regional decision-making structures
  2. Help people to progress as far as possible in education
  3. Get people into training, work placements and jobs
  4. Support people to become self-employment
  5. Assist the development of local Social Enterprises
  6. Work with state, employers, education providers, local groups/leaders, politicians...

# Institutional Environment & Learning



**Local Development**

**Employment**

**Education**



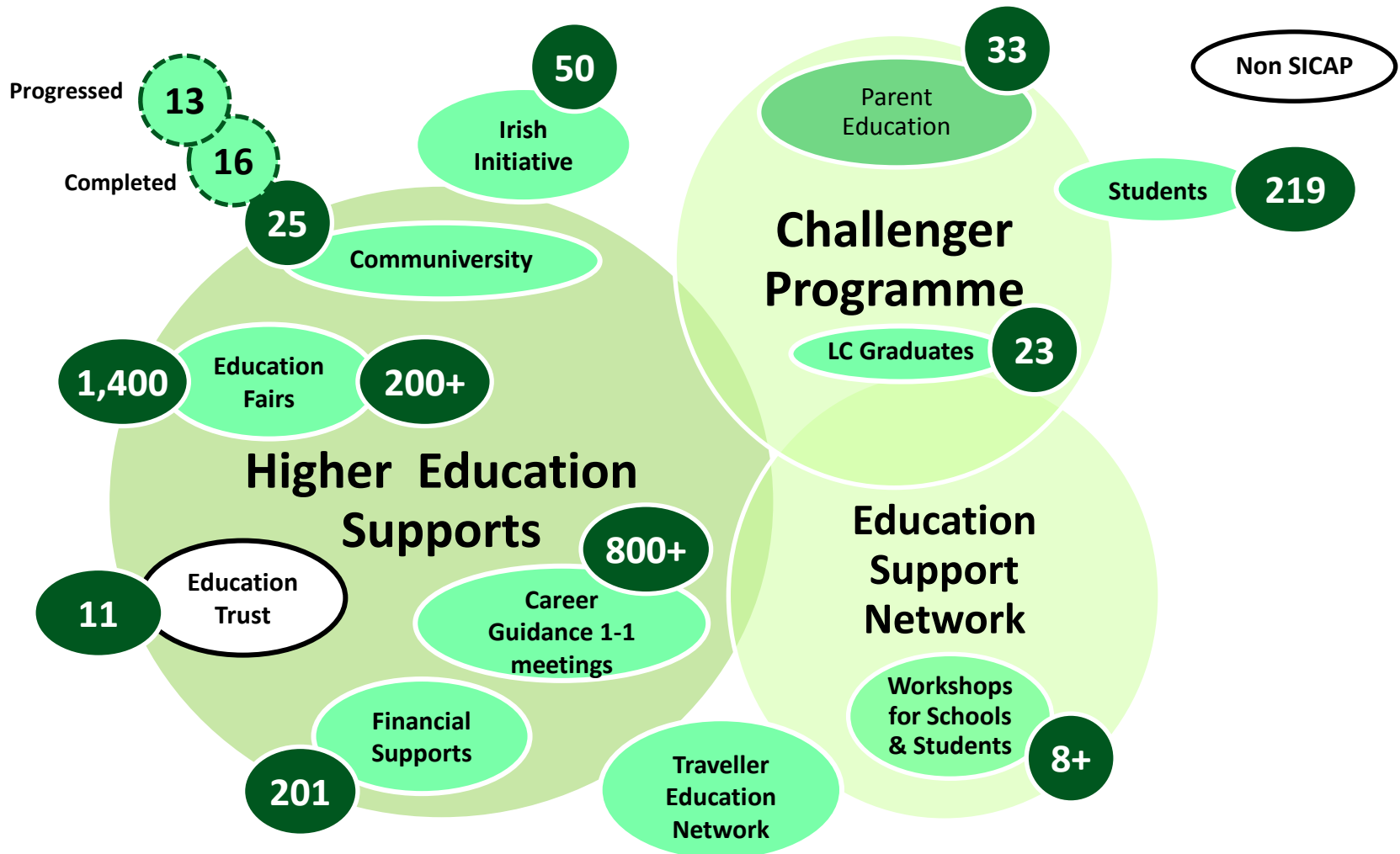
Northside  
Partnership

Ref	Headline Indicator	Target	Actuals
1.	<b>Total number of disadvantaged individuals (15+ years ) one-to-one basis</b>	<b>1136</b>	<b>1204</b>
1.b	% of disadvantaged individuals a disadvantaged area	50 %	36.46
2.	<b>Number of local community groups (LCGs) assisted under SICAP</b>	<b>60</b>	<b>60</b>
3.	Number of LCGs assisted to participate in decision-making structures	33	40
4.	Number of individuals in receipt of a educational support	658	<b>601</b>
4.a	% of those with Leaving Certificate or lower	70 %	84.53%
5.	Number of individuals who have progressed in education	33	<b>17</b>
6.	Number of young people (aged 15-24) in receipt of educational support	63	333
6.a	% of those with Leaving Certificate or lower	80 %	92.79
7.	People aged 15-24 that progressed along education continuum	3	7
8.	Number of children in receipt of educational or developmental support	1196	<b>595</b>
9.	Number of individuals in receipt of employment supports	658	<b>630</b>
9.a	% of those targeted with Leaving Certificate or lower	60 %	53.02%
10.	Those 15 years upwards in part-/full-time employment after 6 months	49	34
11.	In self-employment up to 6 months after employment support	171	160
12.	Aged 15-24 in receipt of employment support	90	34
12.a	% of those targeted with Leaving Certificate or lower	70 %	55.88%
13.	Aged 15-24 in part-time or full-time employment after up to 6 months	15	9
14.	Aged 15-24 progressing to self-employment up to 6 months after support	9	7
15.	Number of initiatives aimed at promoting social enterprises	3	2

# Targets met, still alive & kicking



# Education Programme





# Challenger Programme Awards in DCU Leaving School with the Goal of University



# Challenger Programme Parents Awards



# Life Long Learning - Accessing the World

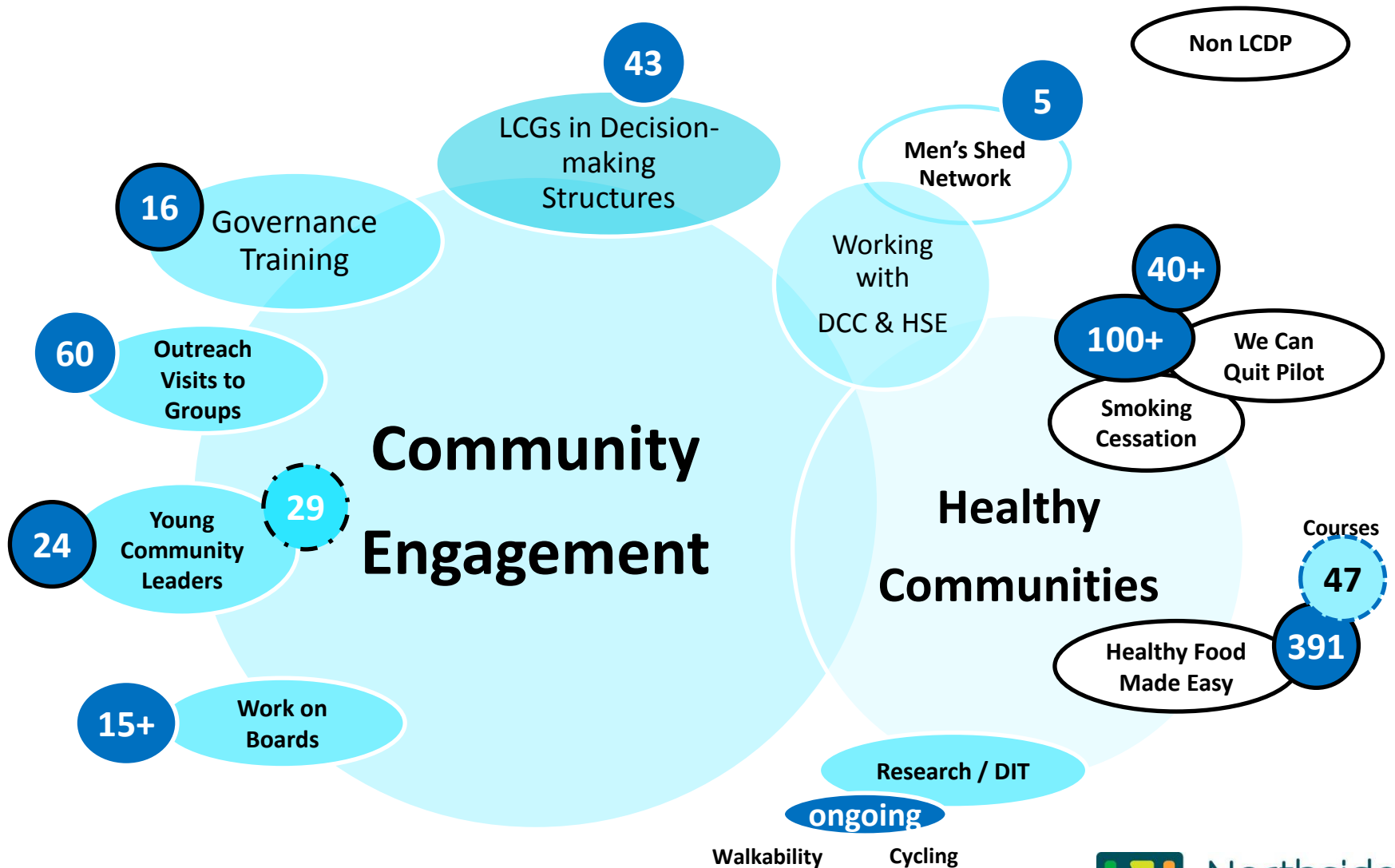
“Flights to Sydney are good today”

“My Bank Shares are Down again”



Northside  
Partnership

# Local Development Programme



# Consultation?



"We have ways of making you talk!"



Northside  
Partnership

# Community meeting on the Built Environment in DIT Bolton Street

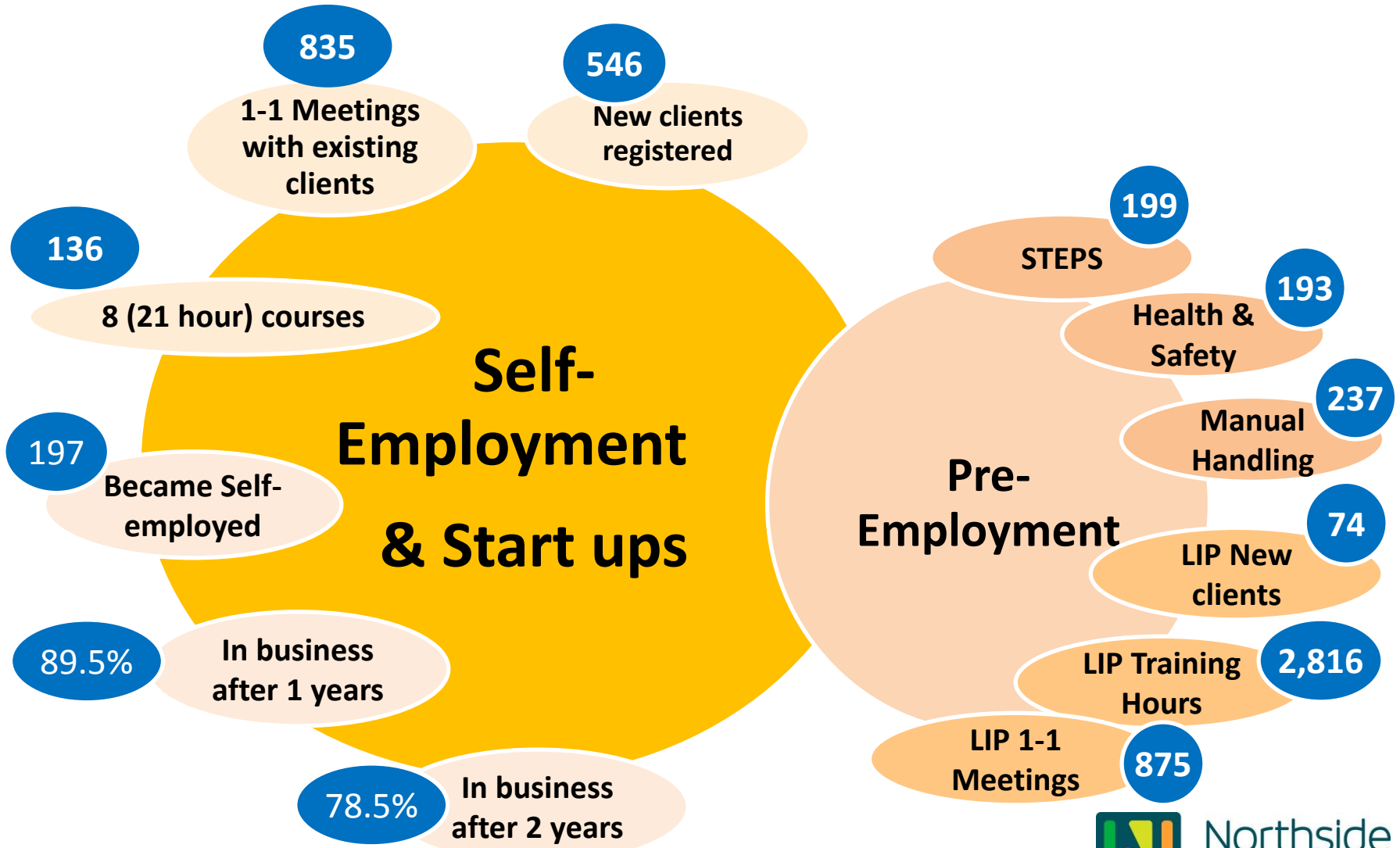
**Building a new city of communities starts somewhere!**



# Safe places for families and communities



# Enterprise & Employment





# Solving Problems





Northside  
Partnership

**+** **Other Programmes**

# Preparing for Life

- Support individuals and couples with parenting skills
- Poor backgrounds
- From Conception to Start day in School
- Making the Children School ready
- Impact on full family – and then community
- Funded research programme... ..results shortly

# Local Employment Services

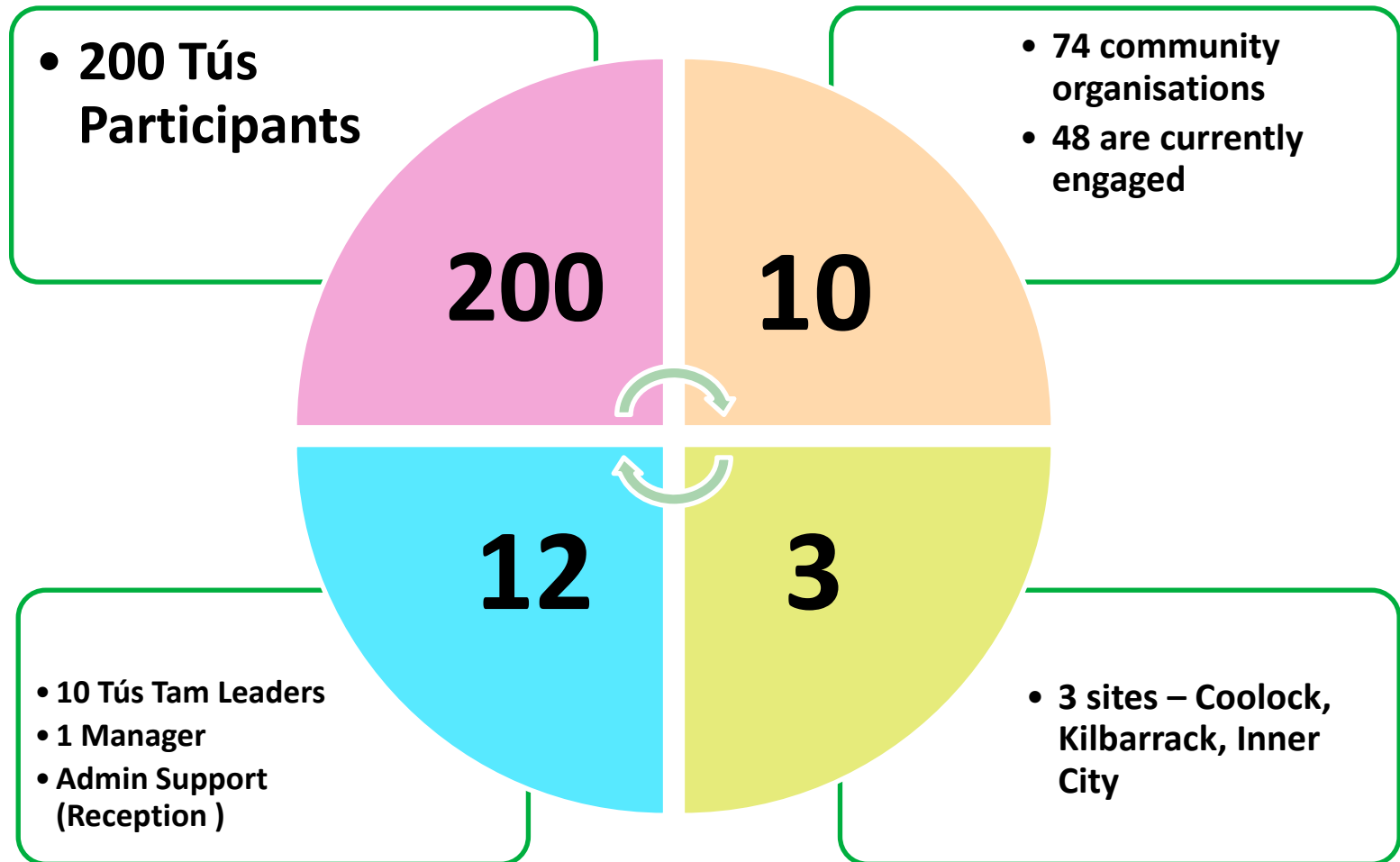
- 1 Co-ordinator and 17 Staff
- 1 Jobs Club within the area
- Employment Services from 2 Locations
- Building caters for Client needs
- **NEAP Clients** the dominant client group
- Competition from Private Sector



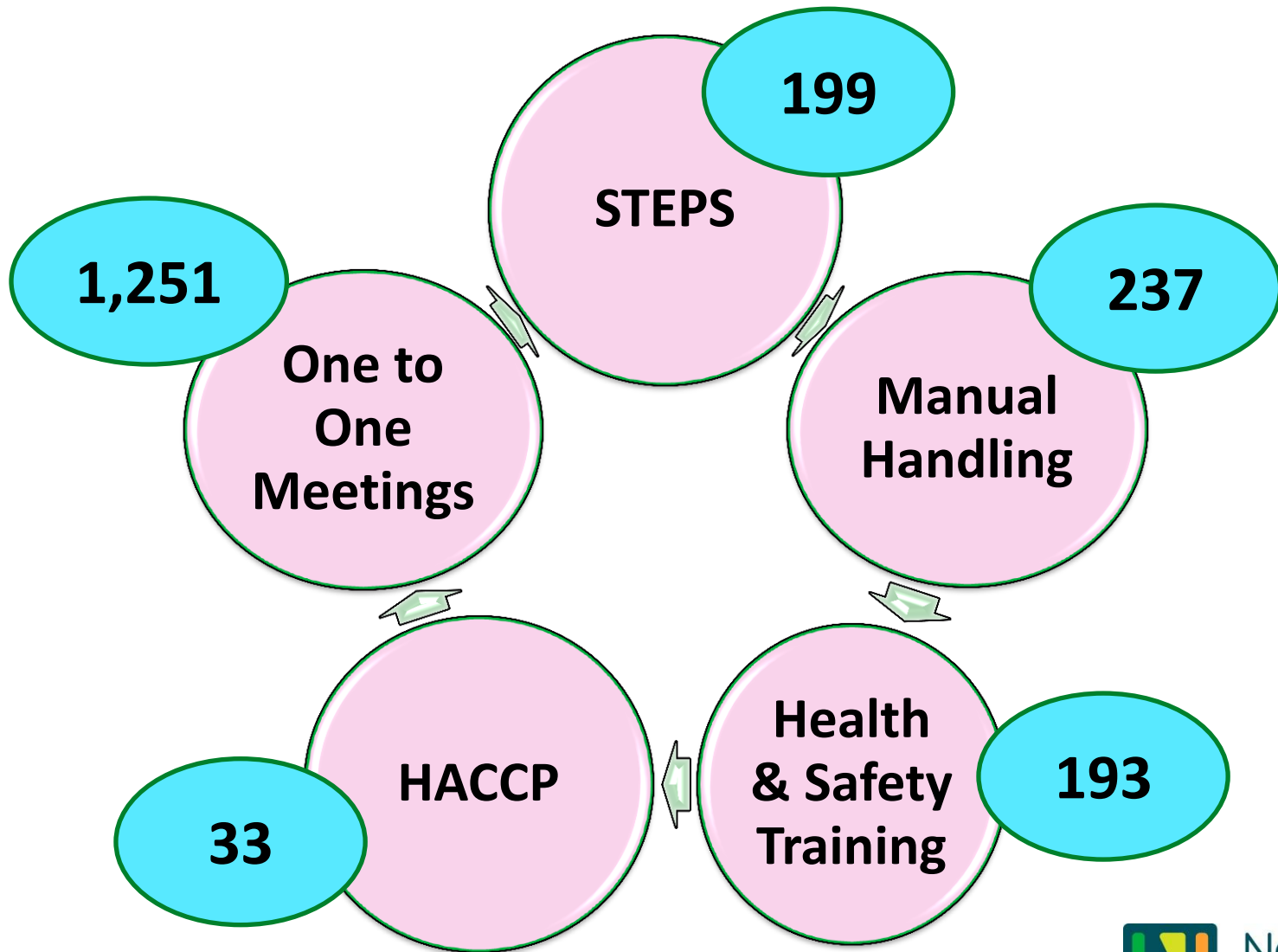
# LES Activity for 2015

Indicator	Targets	Actuals
Number of new clients registered	2500	3310
Number of Clients placed in employment	450	698
Clients Progressed into Education/training	1100	1330

# Tús Programme



# No. of people receiving training supports 2015



# Healthy Food Made Easy

- Coordinator paid by HSE
- Correlation (+) between poor health and low income
- Teach people to get on healthy diet and prepare nutritious meals
- Trained peers deliver course (6 weeks)
- About 500 people trained every year
- Reaches people trained **and** their families





# Income and Expenditure 2015 Breakdown

## For year ended 31<sup>st</sup> December 2015

ACCOUNTS	LCDP	LESN	JOB\$CLUB	PFL	C/CARE BUREAU	LIP	GLOBAL	ADMINISTRATION	DNEDTF	CONTACT POINT	ABC	Midland Area P/ship	Equality for Women	TUS	SICAP	DEPOSIT	OVERALL TOTAL
Opening balance	55862	184302	3341	228218	43918	92	261378	45874	4740	45084	862756	242310	1981	57875	0	760743	2798474
Income	350846	1333365	117749	320613	137127	61551	797650	254961	0	375284	845690	52142	0	147720	852397	323	5647416
<b>Sub Total</b>	<b>406708</b>	<b>1517667</b>	<b>121090</b>	<b>548831</b>	<b>181045</b>	<b>61643</b>	<b>1059028</b>	<b>300835</b>	<b>4740</b>	<b>420368</b>	<b>1708446</b>	<b>294452</b>	<b>1981</b>	<b>205595</b>	<b>852397</b>	<b>761066</b>	<b>8445890</b>
Expenditure	405002	1330435	110801	258770	128948	61944	649346	248917	4708	243696	1432916	286801	0	208506	817927	0	6188717
<b>Closing balance</b>	<b>1706</b>	<b>187232</b>	<b>10289</b>	<b>290061</b>	<b>52097</b>	<b>-301</b>	<b>409682</b>	<b>51918</b>	<b>32</b>	<b>176672</b>	<b>275530</b>	<b>7651</b>	<b>1981</b>	<b>-2911</b>	<b>34470</b>	<b>761066</b>	<b>2257175</b>
Balance Bank	1705	212599	13116	29912	55568	780	419203	53369	32	178642	300285	9044	1981	30697	65063	761066	2402270
O/S cheques	0	25368	2828	9059	3471	1082	9522	1450	0	1970	24755	1392	0	33608	30593	0	145098
<b>Closing Balance</b>	<b>1705</b>	<b>187231</b>	<b>10288</b>	<b>20853</b>	<b>52097</b>	<b>-302</b>	<b>409681</b>	<b>51919</b>	<b>32</b>	<b>176672</b>	<b>275530</b>	<b>7652</b>	<b>1981</b>	<b>-2911</b>	<b>34470</b>	<b>761066</b>	<b>2257172</b>

### Consolidated Balances

Opening Balance 2,798,474

Income 5,647,416

Sub Total 8,445,890

Expenditure 6,188,717

Closing Balance 2,257,175

# Outcome Driven

- SUCCESS



- FAILURE

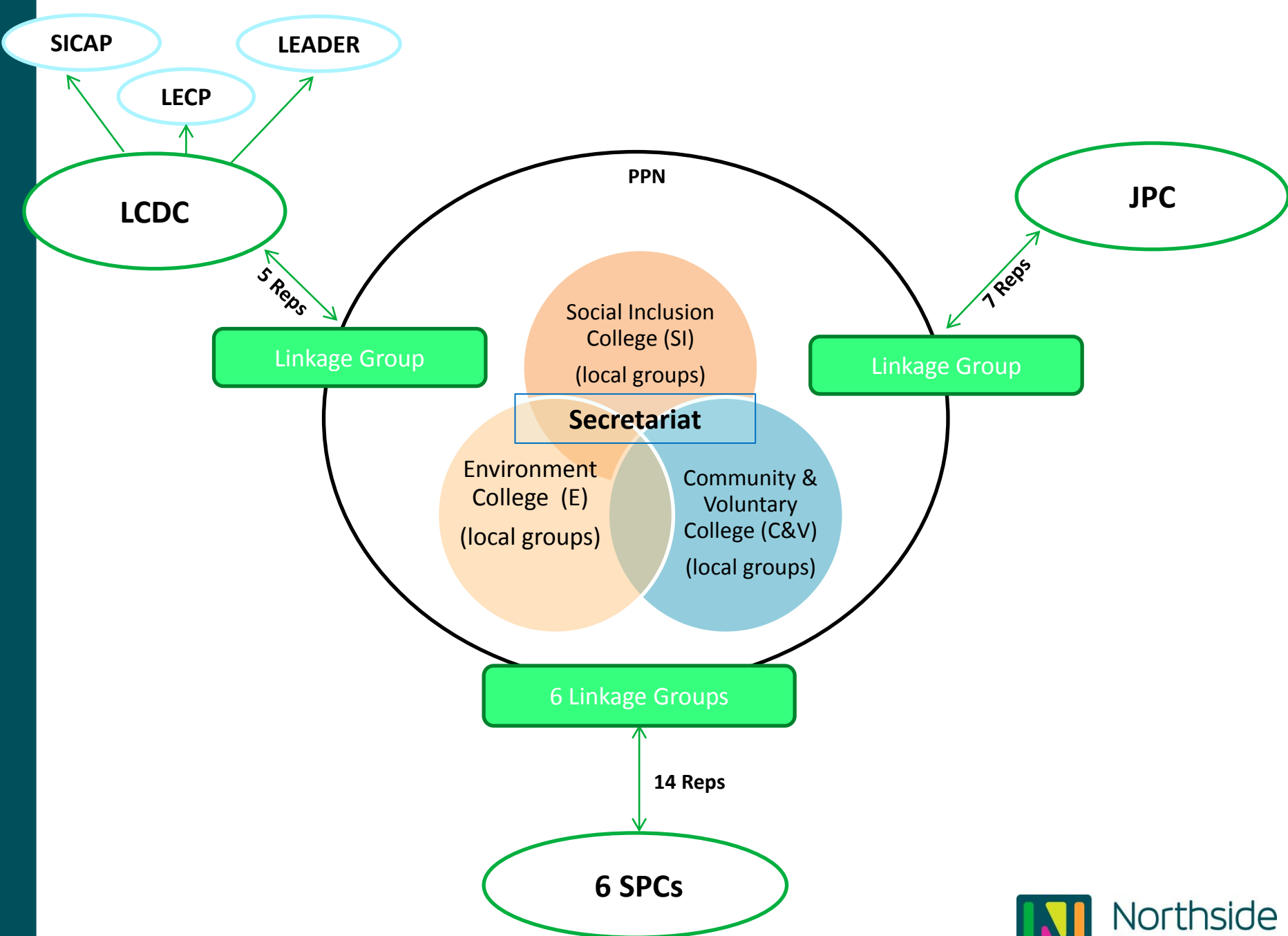


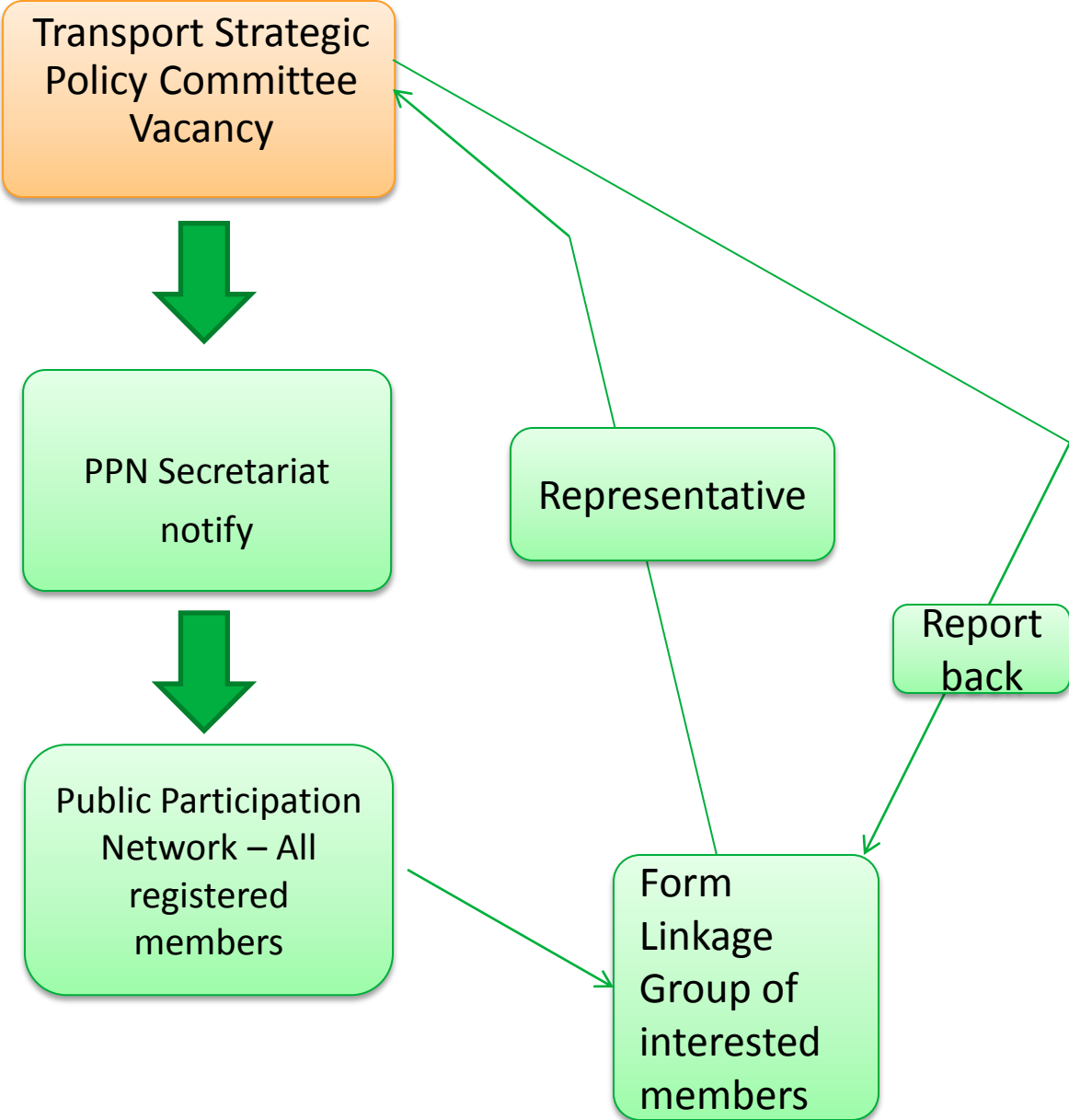
Either Way



# A Changed Governance Landscape

- Local Development has been changing since 1999 – speeding up since 2006
- Moved to Department of Environment, Community and Local Government in 2011
- Local Government Reform Act 2014 – more power to LG
- Local & Community Development Committees and Public participation Networks





Example of Public Participation Network Linkage Group

# Relationship with Strategic Policy Committees

- **Dublin City PPN** representatives have been nominated to:
  - Arts, Culture, Recreation SPC
  - Finance SPC
  - Transportation SPC
  - Environment SPC
  - Planning, International Relations and Property Development SPC
- **Independent Decision making Structure**
  - Local Community Development Committee

# LCDC

- An Independent structure from Local Government
  - 51% of members non Local Government
  - Staffed and run by Local Government staff
- Will oversee and decide on contracts (e.g. SICAP)
- Independent members elected by PPN
- Councillors and others nominated by LG

